



SINGLE ARM PLOW

PLOW WITH POWER

The Single Arm will hold grade in difficult terrain similar to the Parallel Link and floats in a comparable motion to a Double Link. It is the versatile option for tough conditions and speed.

STATE OF THE ART TECHNOLOGY AND COMFORT

MODERN CAB DESIGN

AIR RIDE CAB & SEAT

DIGITAL CLIMATE CONTROL

AUTO STEER READY - PLUG & PLAY INSTALLATION

ERGONOMIC MACHINE CONTROLS

TELEMATICS (OPTION)

The Telematics option integrates with the Danfoss Plus+1® monitoring system, allowing Wolfe to remotely read codes and diagnose related issues. The telematics system is accessible virtually anywhere in the world.

OPTIMAL MACHINE COOLING

The machine cooling system is designed with variable speed reversing fans. The variable speed fans help reduce fuel consumption while the auto / manual reversing feature makes for easy cleaning when operating in dusty conditions.

UNDER HOOD ACCESSIBILITY

The hoods are designed with extra clearance when open for easy maintenance access to the engine and hydraulics.

OSCILLATING TRACKS (OPTION)

Both tracks move separately from one another ensuring optimal balance and traction while providing a smoother ride for the operator.

7° SIDE TILT (OPTION)

The side tilt feature automatically or manually keeps the mole vertical ensuring a precise grade on sloped terrain.

TILE FEEDER

The 4"-6"-8" tile feeder utilizes variable speed, pressure regulated hydraulics and comes with either a rubber or cleated steel drive wheel.

REEL CARRIER (OPTION)

The compact design has the ability to be folded up for easy transportation and quick field-ready transitions.

REAR-STEP & PLATFORM

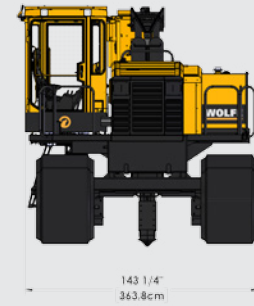
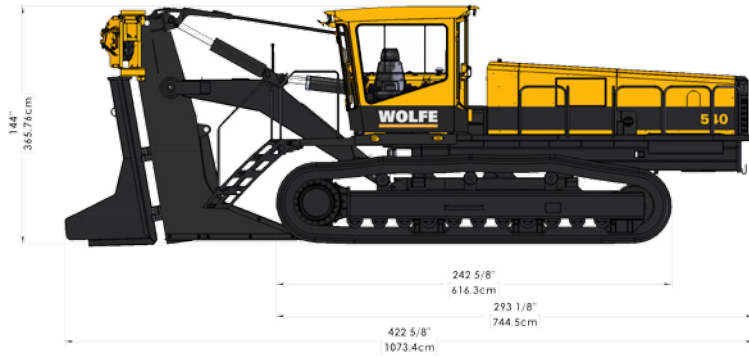
The rear-step is designed to allow operators to easily get on and off the machine quickly and safely while reducing fatigue. The optional hydraulic lift allows the stairs to be raised up out of the way when plowing in mud.

CENTRAL LUBE STATION (OPTION)

Allows safer and easier greasing from central locations. An auto-lube feature is available reducing manual maintenance while ensuring that all lube points are getting the proper amount of grease.

Wolfe Heavy Equipment is a powerful agricultural and commercial trenching manufacturer committed to providing superior engineering and expert service. Wolfe plows are proven to hold grade in even the toughest conditions. UNEARTH THE POWER

WOLFE



STANDARD EQUIPMENT FEATURES

UNDER HOOD ACCESSIBILITY

540HP CAT™ C-15 ENGINE

AIR RIDE CAB/SEAT

GPS/AUTO STEER READY

ERGONOMIC MACHINE CONTROLS

4", 6", 8" HYDRAULIC TILE FEEDER

REAR STEP

Three-Speed Drive System

1st Max: 120 ft/min [2.2km/h]

2nd Max: 240 ft/min [4.4km/h]

3rd Max: 370 ft/min [6.8km/h]

Proportional Hydraulics

58 or 65 Link Tracks available with standard or extreme pads

GPS and Laser ready

Dual or Single Stick Track Control System

718 Bonfiglioli™ heavy duty final drive 180,000NM

State-of-the-art Plus+1[®] Electronic Over Hydraulic Control System with complete machine monitoring, diagnostics and feedback to protect your machine for the long term

A/C and Heated cabs C/W digital climate control

Side mounted cabs to increase the visibility of the work zone and sight line while driving

Engine cooling system with auto/manual reversing fans for cleaning during operation in dusty conditions

Highest ground clearance in the industry

Built-in air compressor

Standard or long Mole length available with 8" or 10" points [20cm and 25cm]

Replaceable QT 400 points, groover, top and bottom plates

Hydraulic driven, pressure regulated tile feeder

GPS arm

Machine Weight Range:

68,500lbs – 86,400lbs [31,000kg – 39,200kg]

Auto Idle

Engine Block Heater

OPTIONAL EQUIPMENT ADD-ONS

COMPACT REEL CARRIER

OSCILLATING TRACK

7° TILT FRAME C/W AUTO SENSING

AUTO/MANUAL LUBE MANIFOLD

CUSTOM COLOURS AVAILABLE

Extended Grouser Bars

Hydraulic Oil Pre-Heater

Tile Cutter and Crusher System

Optional Shoe widths

600HP Cat™ C-18 Engine

Raise and Lower Shoe

Cable Tow System

Cameras and View Monitors

Lights

Telematics

GPS and Laser Systems

