



# 8000 WOLFE 8000

**TRENCH WITH POWER** The Wolfe 8000 features a wheel with a maximum trench depth of 8 ft. [244cm] and up to 46" [117cm] trench width.

## STATE-OF-THE-ART TECHNOLOGY AND COMFORT

### MODERN CAB DESIGN

### AIR RIDE SEAT

### DIGITAL CLIMATE CONTROL

### GPS AND LASER READY - PLUG & PLAY INSTALLATION

### ERGONOMIC MACHINE CONTROLS

### OPTIMAL MACHINE COOLING

The machine cooling system is designed with variable speed reversing fans. The variable speed fans help reduce fuel consumption while the auto/manual reversing feature makes for easy cleaning when operating in dusty conditions.

### UNDER HOOD ACCESSIBILITY

The hoods are designed with extra clearance when open for easy maintenance access to the engine and hydraulics.

### BOOM LIFT (OPTION)

The boom lift provides a convenient method of installing pipe sections into the trench.

### TRENCH BOX (OPTION)

The trench box provides a protected working area behind the trenching wheel for installing pipe sections. This also allows for continuous lengths of pipe or cable products to be installed. Custom configurations available upon request.

### 7 DEGREE SIDE TILT (OPTION)

The side tilt feature automatically or manually keeps the wheel vertical ensuring a precise grade on sloped terrain.

### CARBIDE CUTTING TEETH (OPTION)

Carbide cutting teeth are capable of cutting through frost and more abrasive soil conditions than standard teeth. Various sized wheel trenchers can be equipped with carbide teeth.

### SIDE CUTTERS (OPTION)

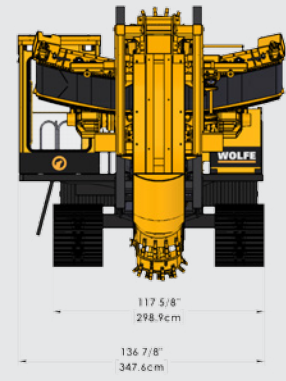
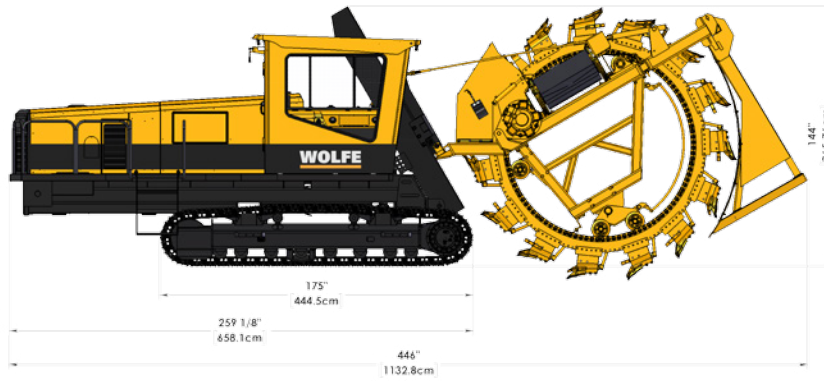
Side cutters increase the trench width by 6" [15.2cm] without changing the bucket system.

### TELEMATICS (OPTION)

The Telematics option integrates with the Danfoss Plus+1® monitoring system, allowing Wolfe to remotely read codes and diagnose related issues. The telematics system is accessible virtually anywhere in the world.

Wolfe Heavy Equipment is a powerful agricultural and commercial trenching manufacturer committed to providing superior engineering and expert service. Wolfe plows are proven to hold grade in even the toughest conditions. UNEARTH THE POWER.

# WOLFE



## STANDARD EQUIPMENT FEATURES

### UNDER HOOD ACCESSIBILITY

### 440HP CAT™ C-15 ENGINE

### AIR RIDE SEAT

### GPS AND LASER READY

### ERGONOMIC MACHINE CONTROLS

### HEAVY DUTY COMPONENTS

CAT™ 320 style 49 link tracks c/w  
20" [70cm] street pads  
Two-Speed Drive System  
1<sup>st</sup> Max. 120 ft/min [2.2km/h]  
2<sup>nd</sup> Max. 260 ft/min [4.75km/h]  
Proportional Hydraulics / load-sensing pumps  
Dual or Single Stick Track Control System  
State-of-the-art Plus+1® Electronic Over Hydraulic Control System  
Side Mounted Cabs (Left or Right hand)  
A/C and Heated Cabs C/W digital climate control  
GPS and Laser ready  
Engine Cooling System with auto/manual reversing fans  
Built-in Air Compressor  
Engine Block Heater  
Auto Idle  
1.25" [3.17cm] thick wheel rims  
Heavy duty bolt-on wheel segments  
Heavy duty heat treated buckets  
Heavy duty drop forged teeth  
Dual lower truck roller  
Rear upper truck roller  
Upper carrier truck roller (head shaft support)  
Machine Weight Range: 52,500lbs - 70,000lbs [23,814kg - 32,000kg]

## OPTIONAL EQUIPMENT ADD-ONS

### 7° TILT FRAME C/W AUTO SENSING

### BOOM LIFT

### TRENCH BOX

### AUTO/MANUAL LUBE MANIFOLD

### CUSTOM COLOURS AVAILABLE

Wolfe heavy duty 57 link tracks c/w 31.5" [80cm] single grouser pads  
Carbide Cutting Teeth  
Side Cutters  
Hydraulic Oil Pre-Heater  
Cable Tow System  
Cameras and View Monitors  
Exterior Light Package  
Telematics  
Auto Steer Ready

## XD PACKAGE UPGRADE

1.5" [3.8CM] THICK WHEEL RIMS AND BUCKETS.  
WIDER DRIVE SPROCKETS AND WHEEL SEGMENTS.  
EXTREME DUTY LOWER ROLLERS & UPPER TRUCKS.  
30" [76.2CM] - 36" [91.5CM] TRENCH WIDTH.

HEAVY DUTY UPRIGHTS AND SLIDERS, MAST CYLINDER, AND PIVOT ASSEMBLIES.

WITH THE SPECIAL TOOTH HOLDERS, IT CAN BE EQUIPPED WITH FLAT DIGGING OR CARBIDE BULLET TEETH.

